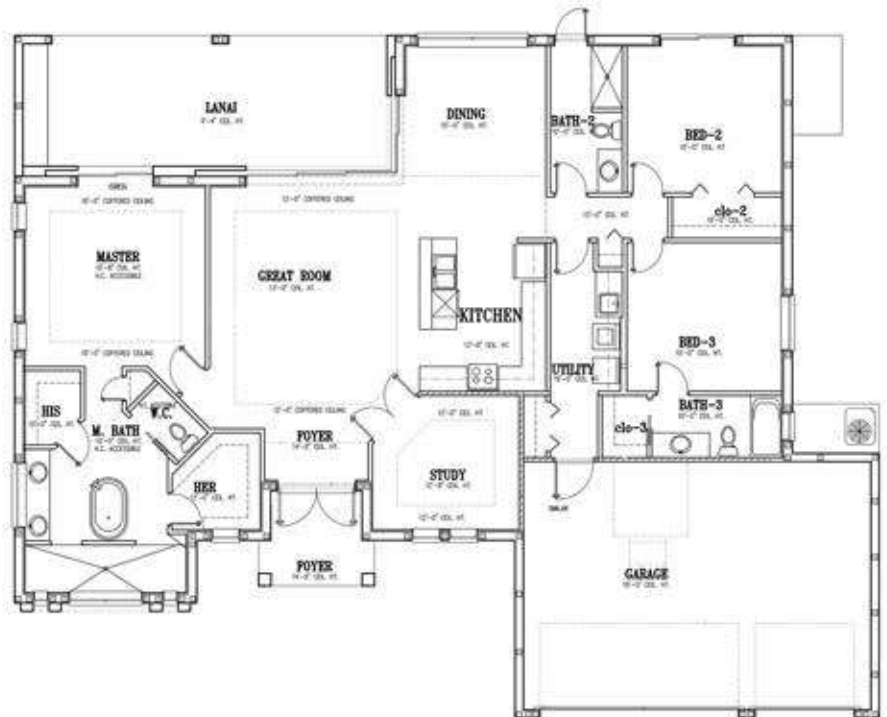


# TOLEDO



## HOUSE FEATURES

- 12'clg. height in living area with 13' tray ceiling and 10'8" clg. height in bedrooms
- Brick paver driveway and walkway
- 5v Metal Roof
- Hurricane impact windows
- European Style cabinets
- Quartz Countertop with Waterfall in Kitchen
- Stainless steel Appliances
- Moen plumbing trim
- Tile Flooring throughout the house
- St Augustine sod and landscaping
- Irrigation System
- 8' Interior doors
- 5 1/2" baseboard



### BUILDING AREA

LIVING AREA:	2,272	SQ FT
GARAGE:	627	SQ FT
LANAI:	286	SQ FT
ENTRY:	60	SQ FT
<b>TOTAL AREA:</b>	<b>3,246</b>	<b>SQ FT</b>

